

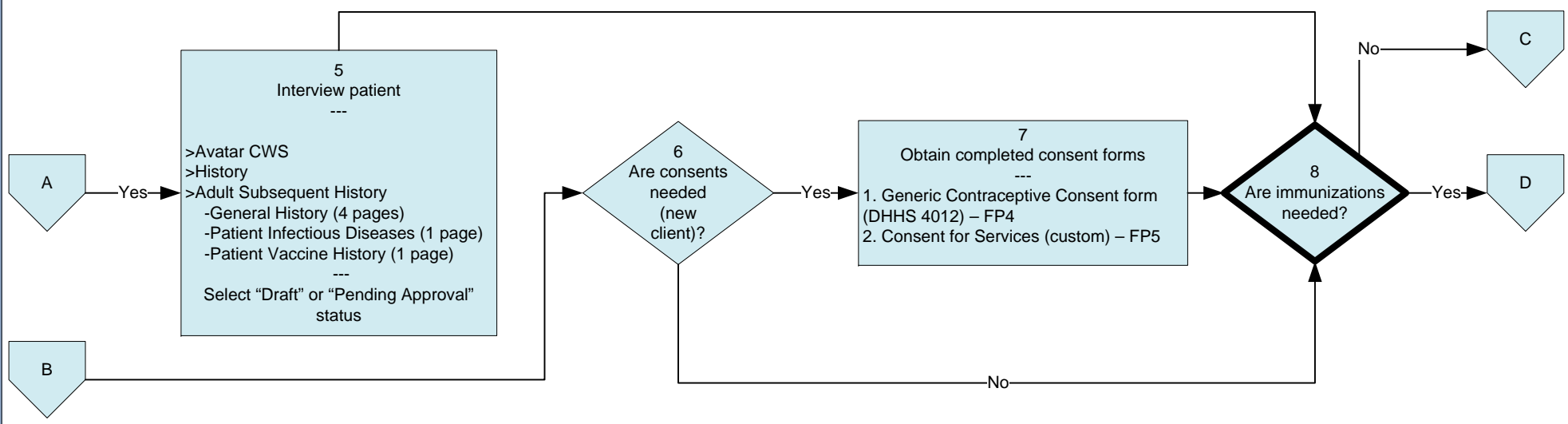
- Activity Details**
- COA (Clinical Office Assistant) swim lane represents Medical Office Assistant (MOA), Licensed Practical Nurse (LPN) or Certified Nurse Assistant (CNA) job titles.
 - Tasks that are specific to HIS have --- that separate two sections of text. The top section is the task, the bottom section is the HIS screen path. If there is a second ---, the information in the third section is specific information regarding the functionality in HIS on the screen.
 - Tasks that have forms currently associated with the task have --- that separate two sections of text. The top section is the task, the bottom section has the forms. The forms have a reference number after them, i.e. FP1. The number refers to a scanned version of the form.
 - Based on HealthMetrics recommendations moved education component of the visit to the exit interview section to hopefully improve patient education retention.

COA

Nurse

Practitioner

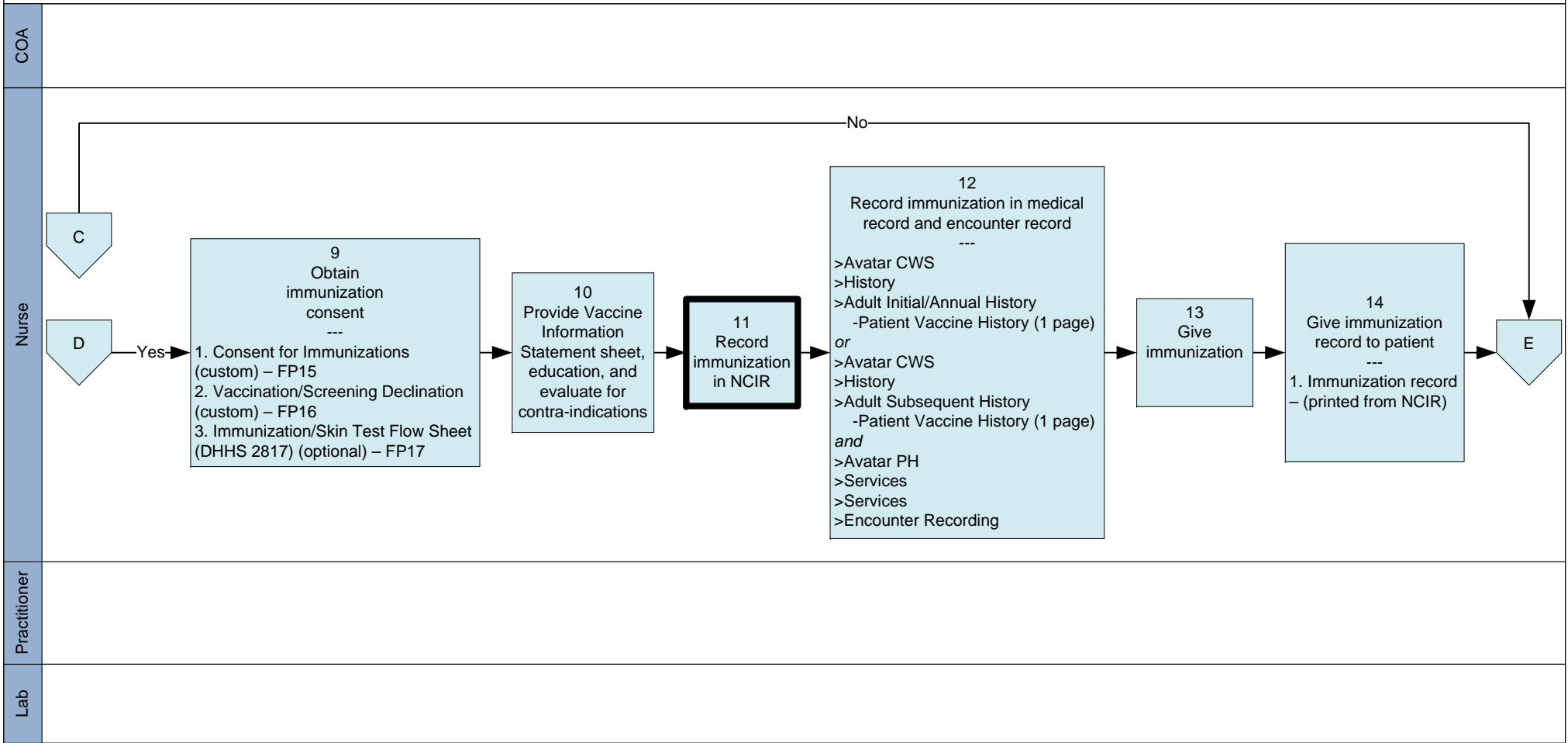
Lab



Activity Details

- Based on HealthMetrics recommendations the nurse should not "interview the patient" (task #5), in order to eliminate the duplication of effort in the history review by having only the practitioner review/amend the history. The nurse just verifies that all information has been completed.
- The shapes that have thick black outlines around tasks, decisions, or predefined task series are specific to a task performed using a non-HIS system.

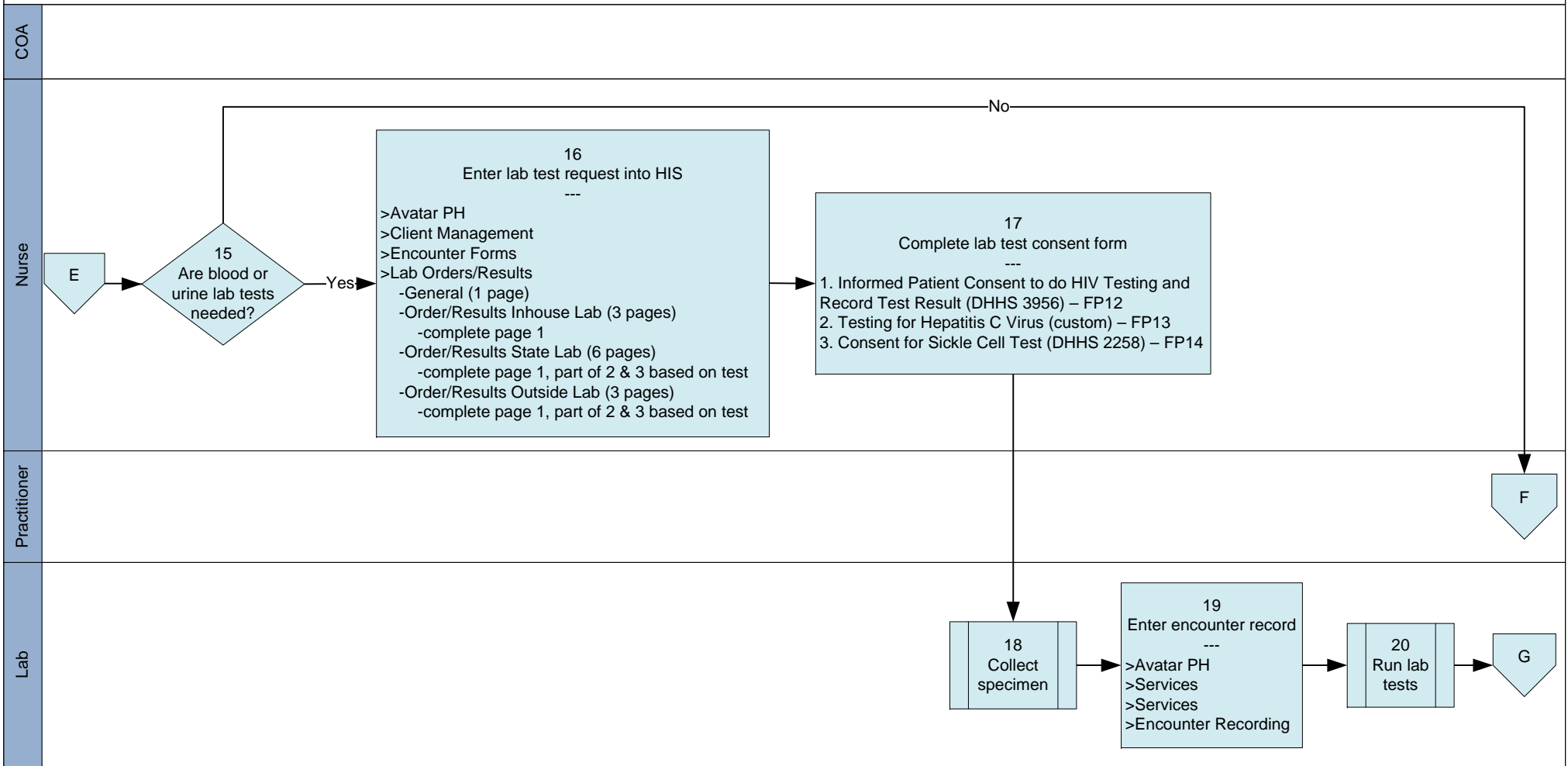




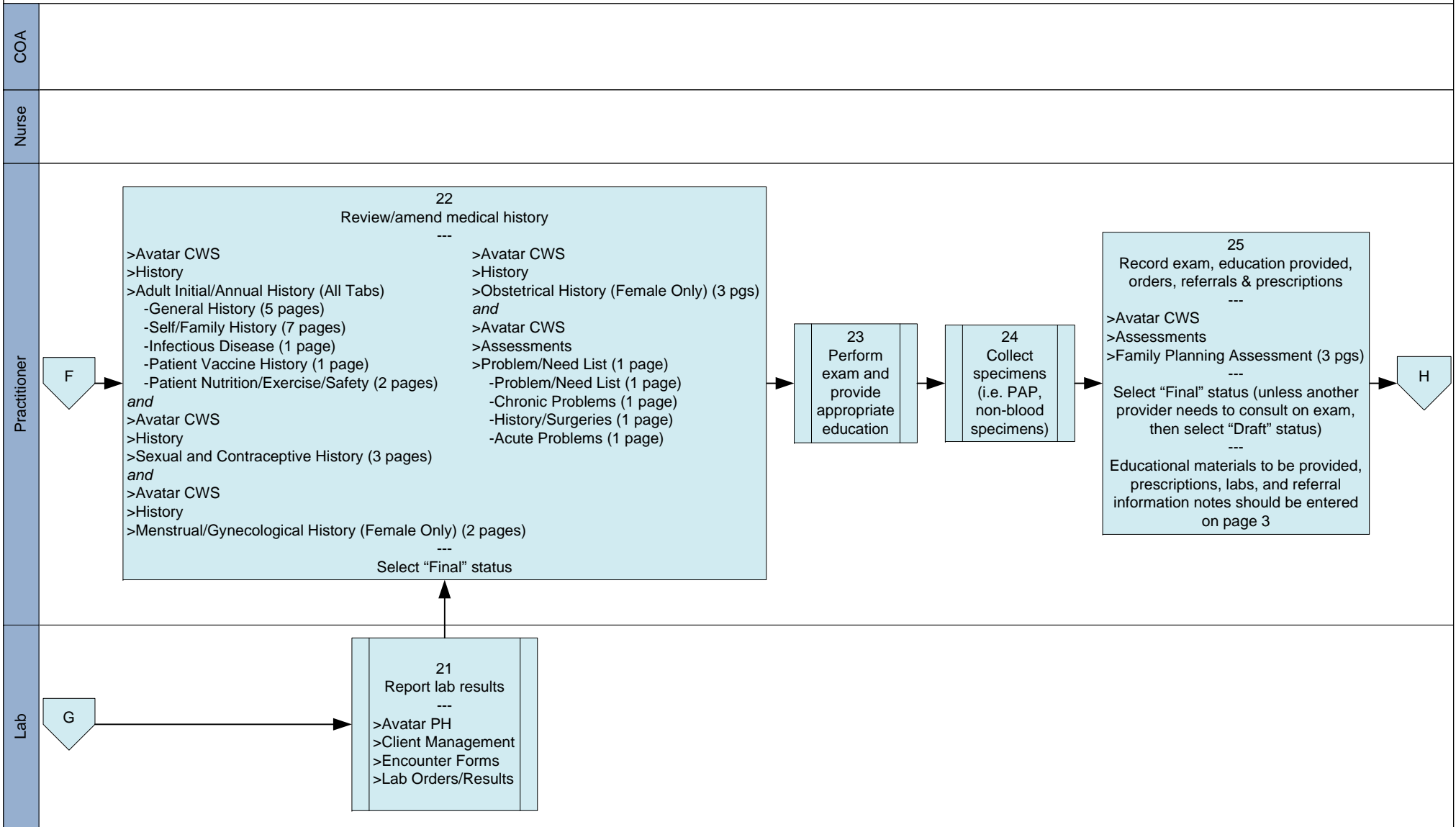
Activity Details

- The shapes that have thick black outlines around tasks, decisions, or predefined task series are specific to a task performed using a non-HIS system.



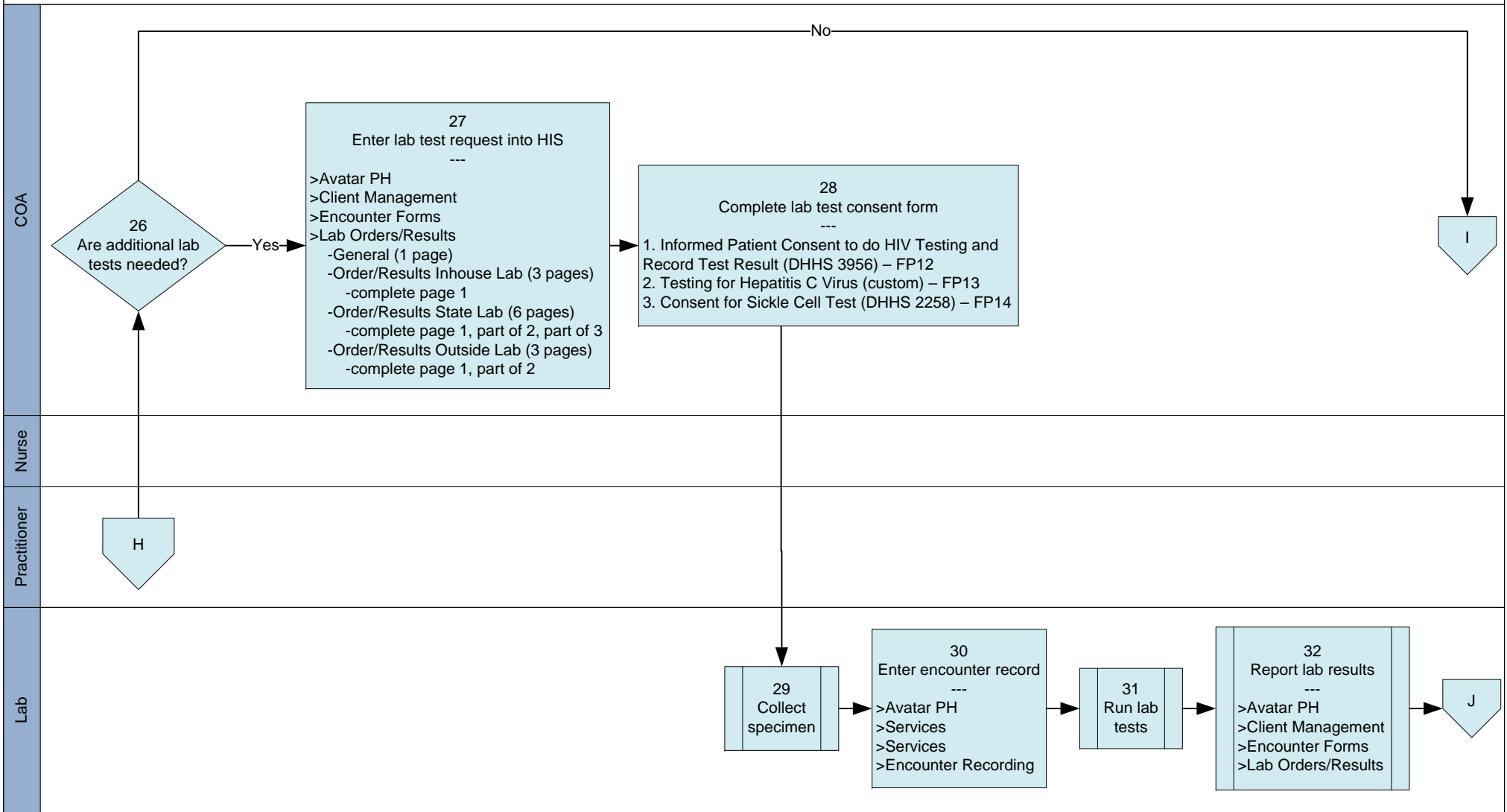


Activity Details



Activity Details

- #21 – Recommend to enter "see chart" rather than input lab test results until HIS lab screens are enhanced.



Activity Details

Legend:



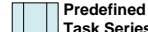
Decision



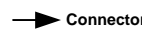
Terminator Point



Task



Predefined Task Series



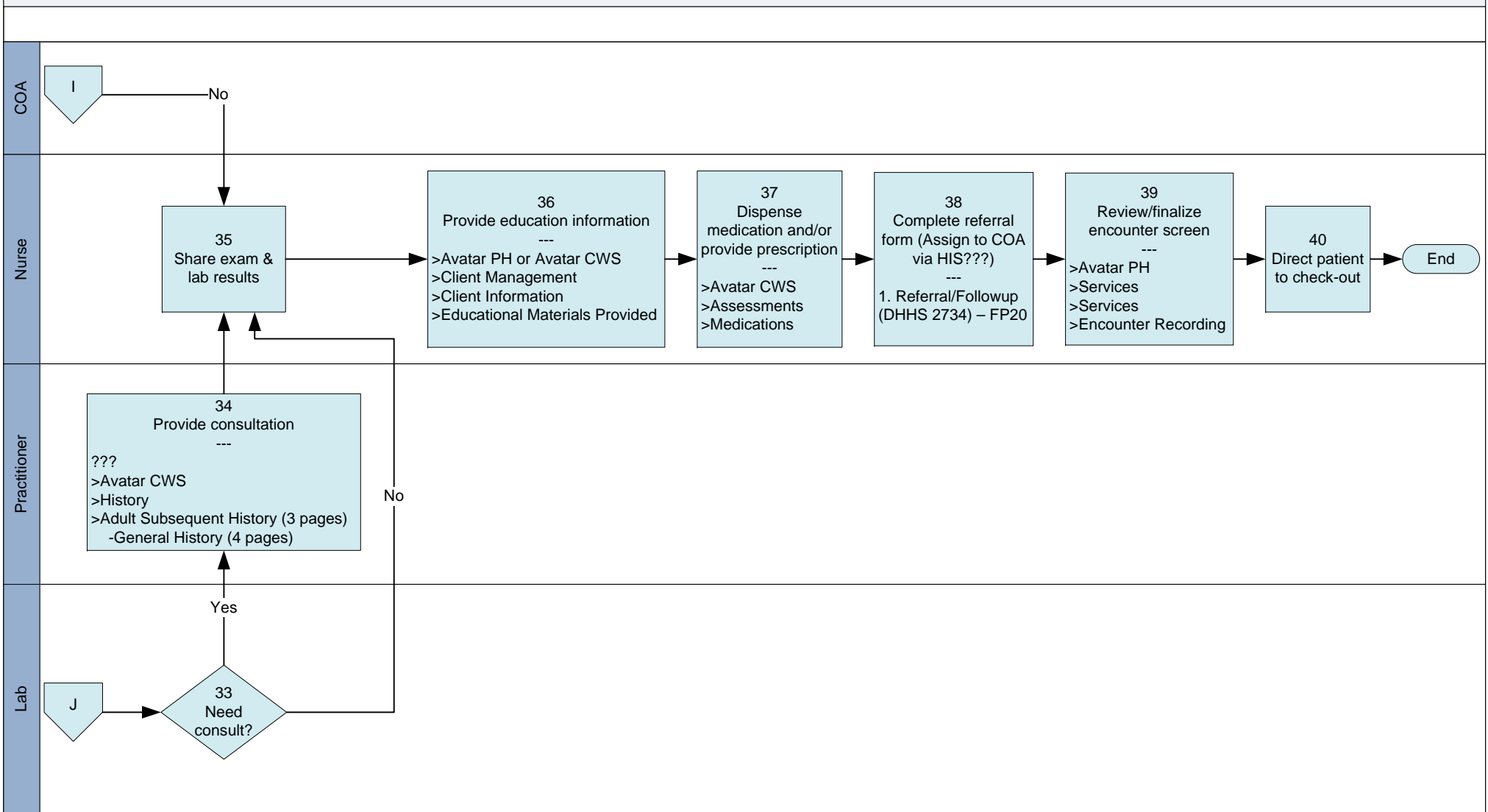
Connector



On-Page Connector



Off-Page Connector



Activity Details

- #34 – Provide consultation – Unsure where consultation notes would go if something else came up (i.e. labs came back with an issue) since the family planning assessment would most likely be final.