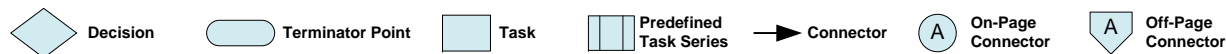
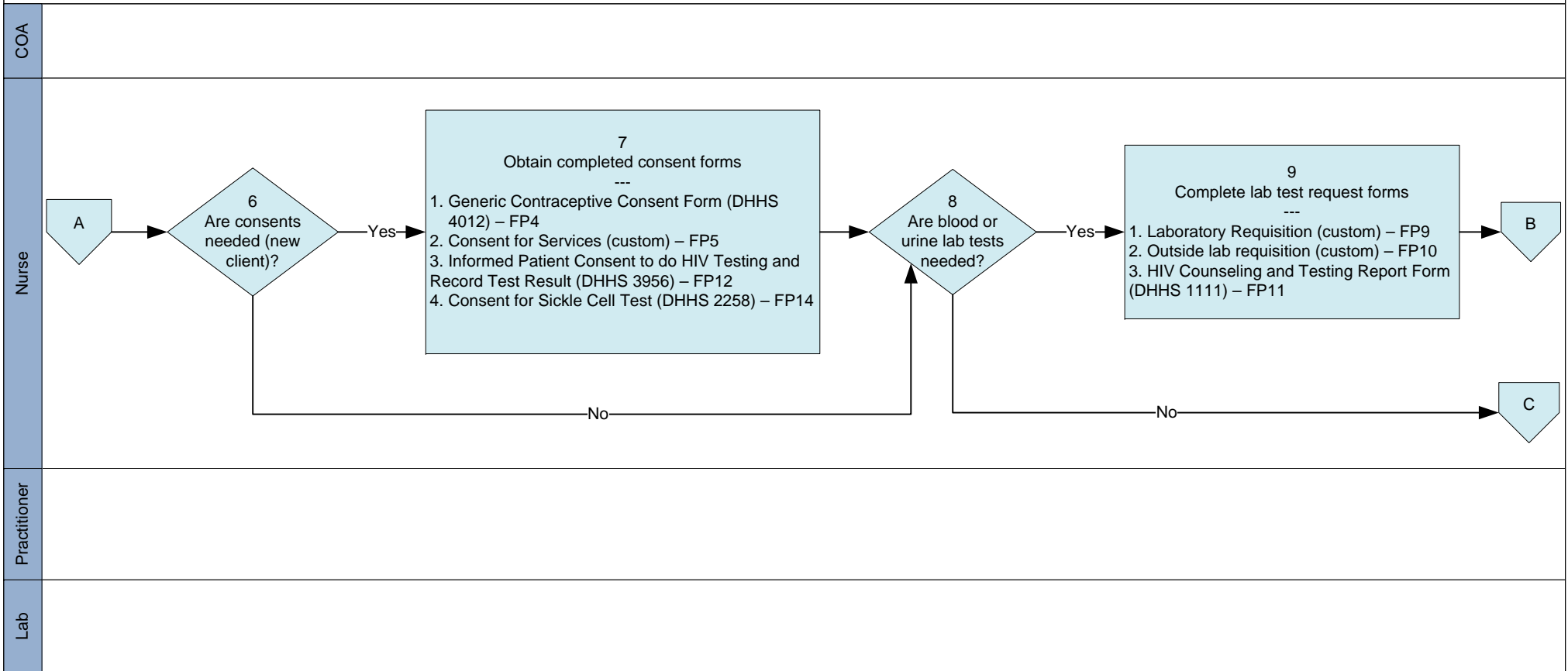
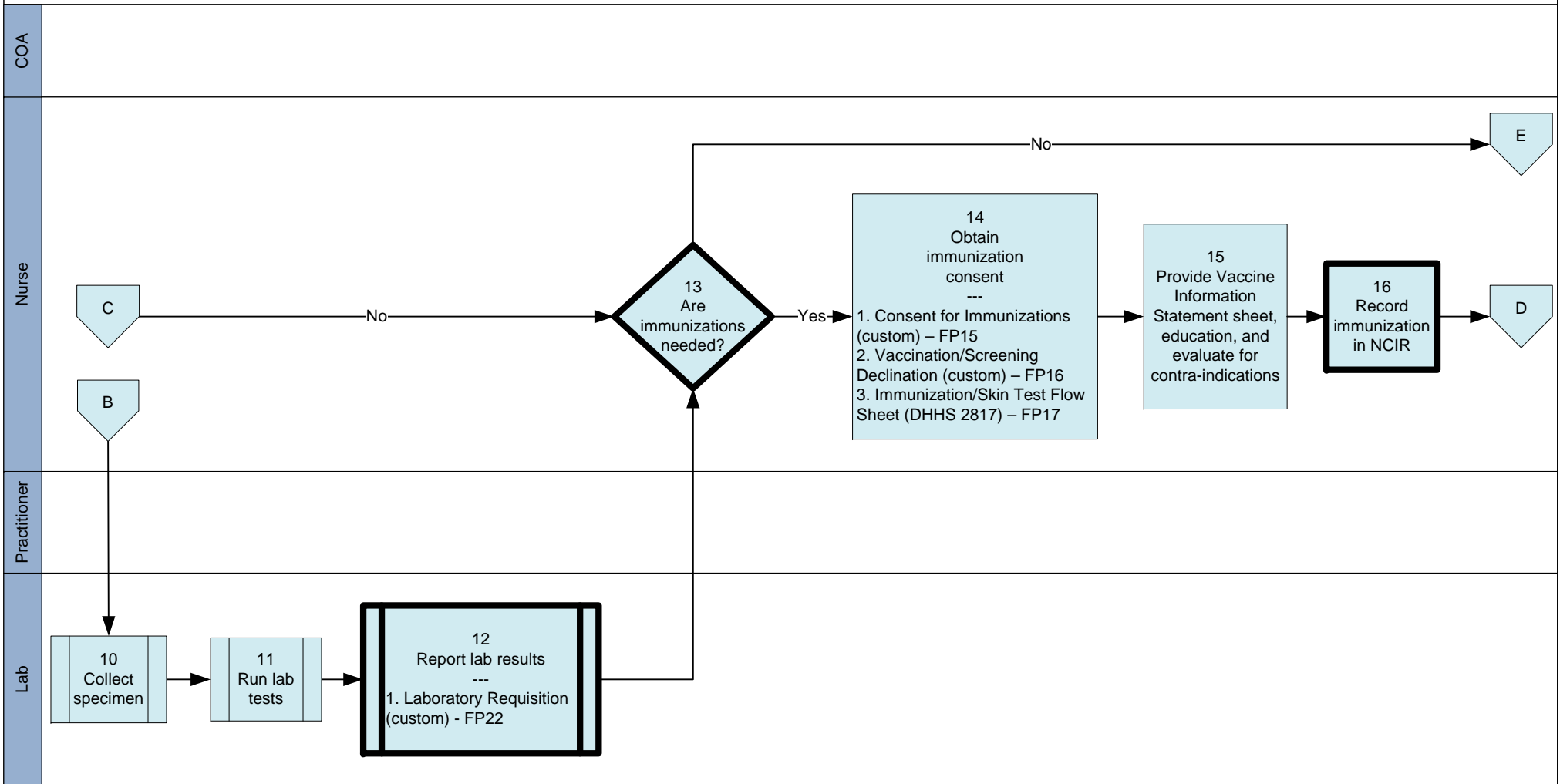


- Activity Details**
- COA (Clinical Office Assistant) swim lane represents Medical Office Assistant (MOA), Licensed Practical Nurse (LPN) or Certified Nurse Assistant (CNA) job titles.
  - Tasks that have forms currently associated with the task have --- that separate two sections of text. The top section is the task, the bottom section has the forms. The forms have a reference number after them, i.e. FP1. The number refers to a scanned version of the form.
  - In some local health departments, labs are currently drawn per standing order prior to an exam. This is not documented here.
  - Based on HealthMetrics recommendations moved education component of the visit to the exit interview section to hopefully improve patient education retention.
  - Based on HealthMetrics recommendations the nurse should not “interview the patient” (task #5), in order to eliminate the duplication of effort in the history review by having only the practitioner review/amend the history. The nurse just verifies that all information has been completed.

**Legend:**



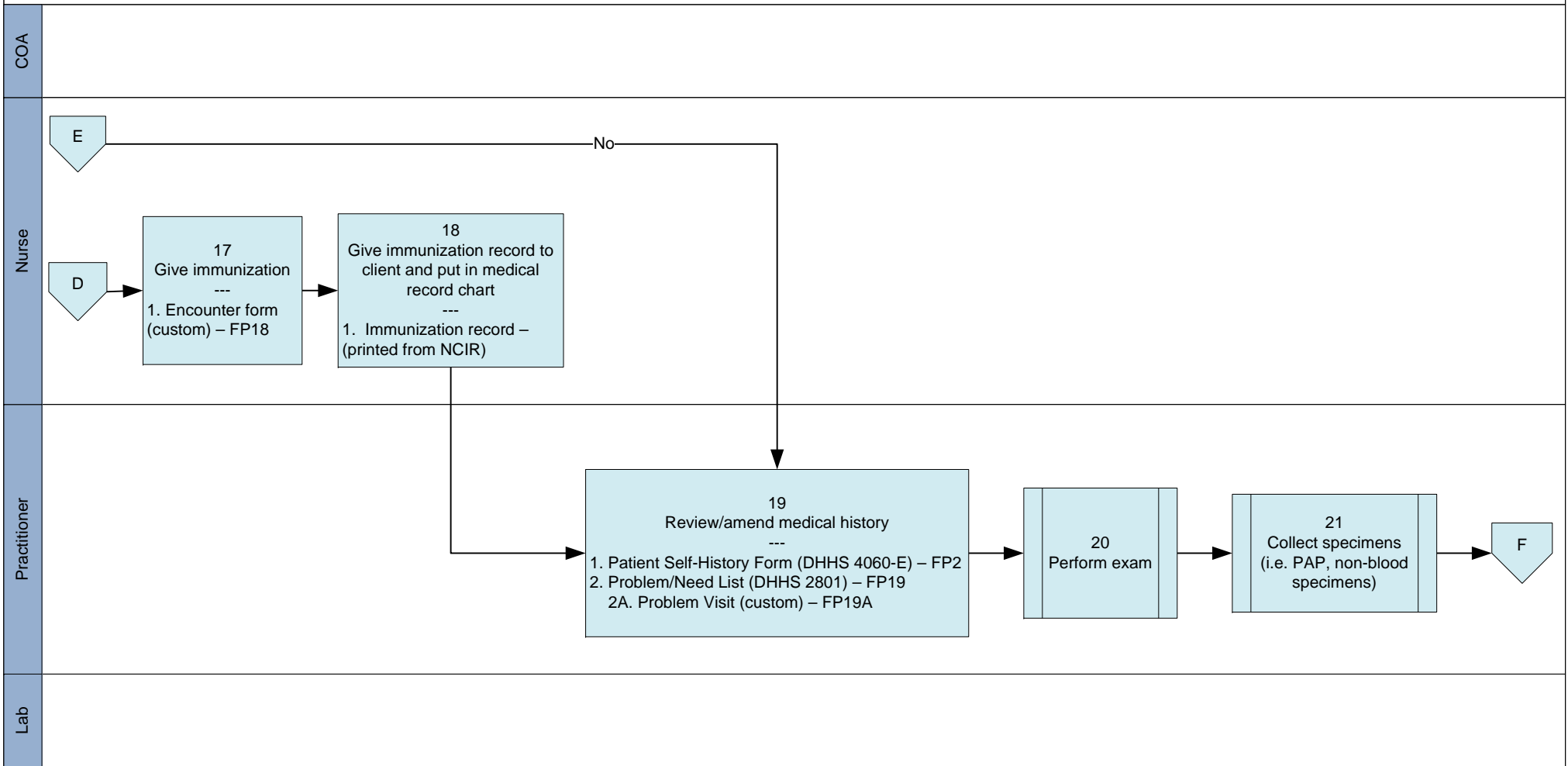




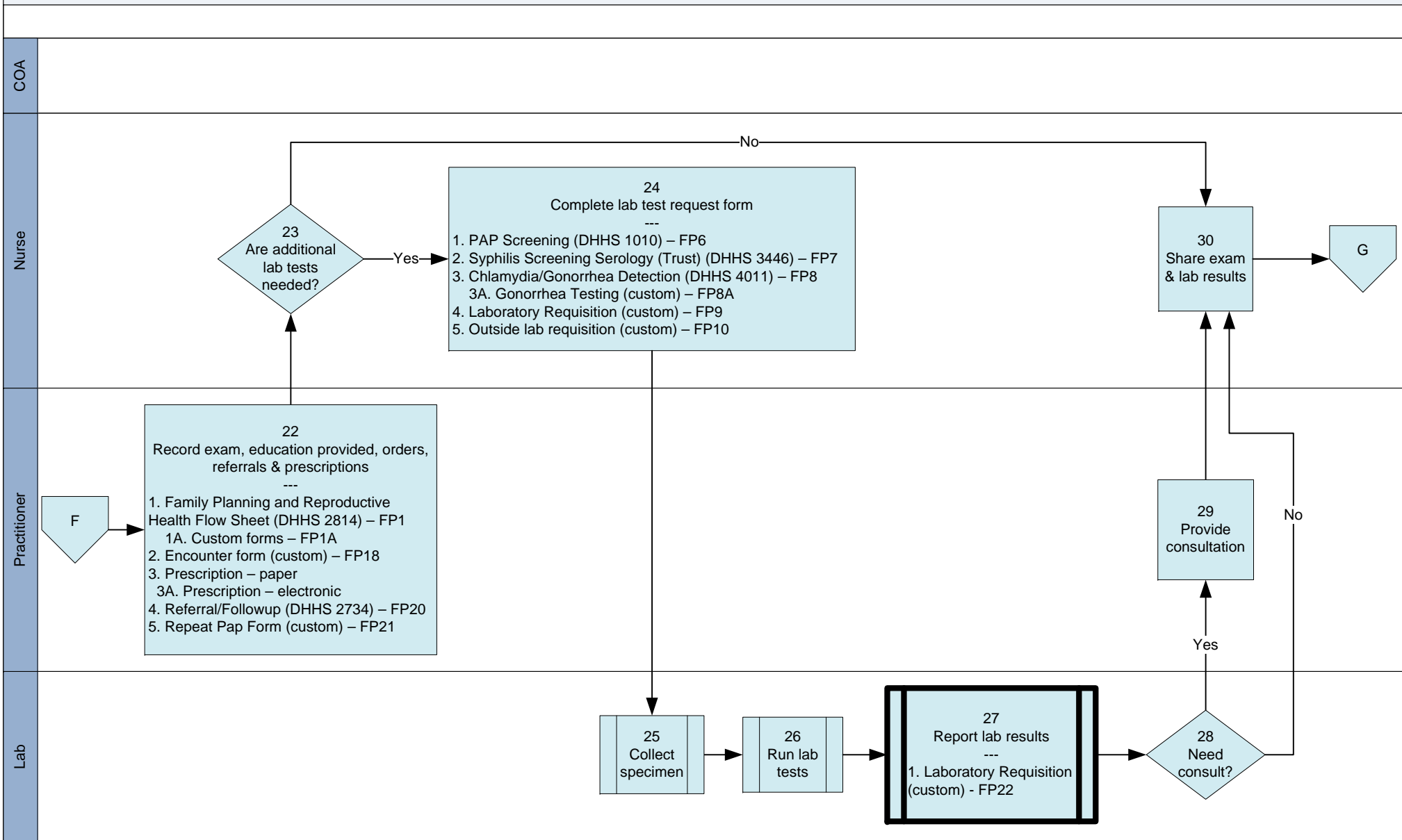
**Activity Details**

- The shapes that have thick black outlines around tasks, decisions, or predefined task series are specific to a task performed using a non-HIS type system.





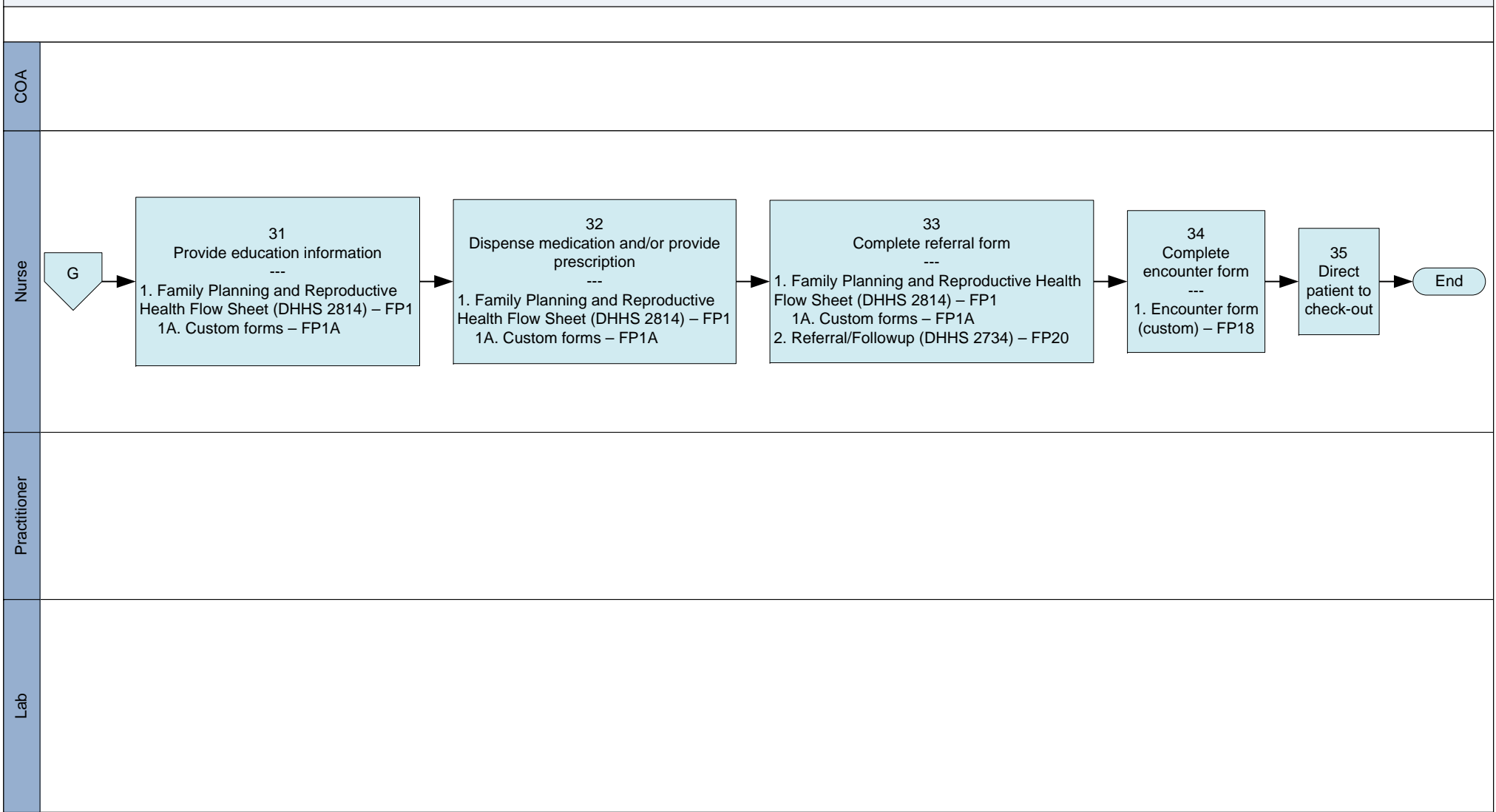
**Activity Details**



**Activity Details**

- The shapes that have thick black outlines around tasks, decisions, or predefined task series are specific to a task performed using a non-HIS type system.





<b>Activity Details</b>	
-------------------------	--